

ETC - bush replacement tool kit for construction vehicles

- Safe, simple hands free operation
- Up to 60% time and labour saving
- Can be adapted to suit all makes of construction plant and heavy equipment
- Flexible and adaptable
- Improved health and safety compared to traditional methods
- Appreciated by both workshop owner, mechanic and vehicle owner
- Suitable for both work shop and on site repairs

The ETC pin and bush extraction tool kits have been developed in conjunction with the major manufacturers of heavy plant and special purpose machines for the construction industry. These kits now provide a lightweight, in-situ, time and labour saving solution for the demanding service requirements of those machines.

Using the lightweight high-tensile aluminium hollow bore cylinder together with the unique stacking C-sleeve system and comprehensive sets of accessories incorporated in these kits, the equipment can easily be used on many makes of machines.

The work is carried out directly on the vehicle thus eliminating the need for removal of heavy and bulky machine parts. The mechanic can therefore in a safe, lean and professional way carry out the bushing replacement work. Using this method, the risk of damaging the various machine parts is minimized and the vehicle can quickly, with a minimum of down-time, be back out in the field .

Please note that the kit is sold without a toolbox and bushing press plate.





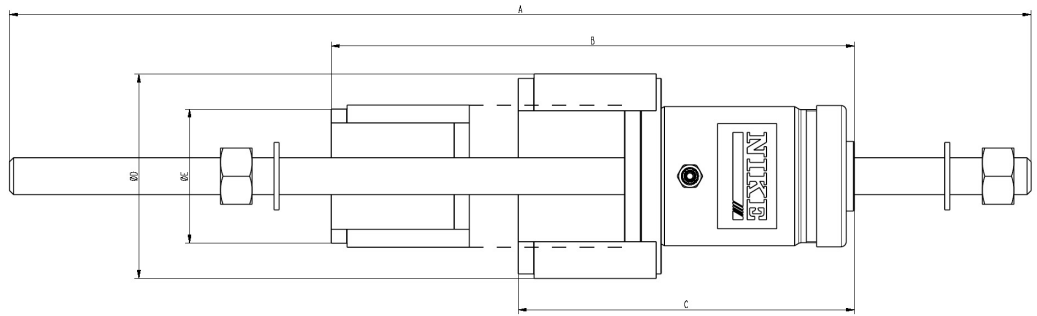
Technical data

Technical data

Name	Capacity kN (t)	Stroke mm
ETC37	358 (36)	51
ETC50	508 (52)	104

Content

Name	ETC37	ETC50	Description	Technical data
TR36-1000	•	-	Threaded rod with washers/nuts	M36 x 1000 10.9
TR48-1000	-	•	Threaded rod with washers/nuts	M48 x 1000 8.8
TAS95	•	•	Support sleeve	Ø95 mm
TC115A	• (x2)	• (x2)	C-Sleeve	Ø115 mm
TC175	-	• (x2)	C-Sleeve	Ø175 mm
TP115A	•	•	Adapter for TC115A	Ø115 mm
TP175	-	•	Adapter for TC175	Ø175 mm
TAD24-36	•	-	Thread adapter	M36 --> M24
TAD30-36	•	-	Thread adapter	M36 --> M30
TAD30-48	-	•	Thread adapter	M48 --> M30



Name	A mm	B mm	C mm	D ø mm	E ø mm
ETC37	1000	325	-	-	139
ETC50	1000	432	416	200	139



www.nikehydraulics.com

NIKE HYDRAULICS AB
 Box 1107
 631 80 Eskilstuna
 SWEDEN
 Tel +46 16 - 16 82 00
 Fax +46 16 - 13 93 16
 info@nikehydraulics.se

NIKE HYDRAULICS Inc.
 3980 W. Albany, Unit #1
 MCHENRY, IL 60050
 USA
 Tel + 1 815 385 7777
 Fax + 1 815 385 7776
 info@nikehydraulics.com

NIKE POWER EQUIPMENT Ltd.
 Unit 6, Stechford Trading Estate
 Lyndon Road, Stechford
 BIRMINGHAM B33 8BU, UK
 Tel +44 121 789 77 07
 Fax +44 121 789 68 66
 info@nikehydraulics.co.uk