

CPF - Pull cylinders

CPF cylinders are pulling cylinders with 5 ton or 11 ton capacity. Both models are part of NIKE's push and pull kits (refer to separate product information for more information) and have threads in the piston pin and cylinder bottom for connection of accessories. CPF cylinders are used when a pulling force is needed for alignment of welded constructions, for example.



Options for quick couplings

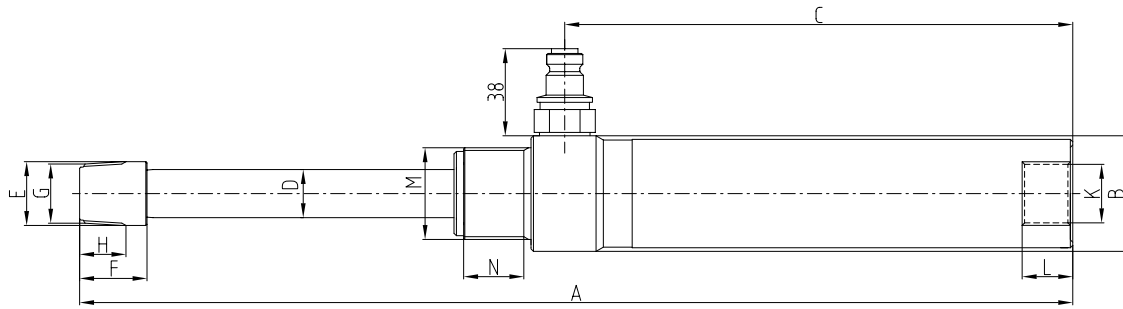
All cylinders can be delivered with quick couplings of insert type - male ⁽¹⁾ or of screw model - female ⁽²⁾. When ordering cylinders with screw type coupling, put "P" at the end of the model (e.g. CFC1010P).



Technical data



Name	Working press. MPa	Capacity kN (t)	Stroke mm	Stroke volume cm ³	Piston ø mm	Piston area cm ²	Diameter mm	Height mm	Weight kg
CPF705	70	45 (5)	125	80	20	6	48	412	2.4
CPF709	70	110 (11)	127	199	32	16	70	436	5.9



CPF 705, 709

Name	Capacity kN (t)	A mm	B ø mm	C mm	D ø mm	E ø mm	F mm	G	H mm	K	L mm	M mm	N mm
CPF705	45 (5)	412	48	211	20	26.5	28	3/4"-14 NPT	17.5	3/4"-14 NPT	20	1 1/2"-16UN	25
CPF709	110 (11)	436	70	215	32	46	35	1 1/4"-11 1/2 NPT	25.9	1 1/4"-11 1/2 NPT	20	2 1/4"-14UN	26



www.nikehydraulics.com

NIKE HYDRAULICS AB
 Box 1107
 631 80 Eskilstuna
 SWEDEN
 Tel +46 16 - 16 82 00
 Fax +46 16 - 13 93 16
 info@nikehydraulics.se

NIKE HYDRAULICS Inc.
 3980 W. Albany, Unit #1
 MCHENRY, IL 60050
 USA
 Tel + 1 815 385 7777
 Fax + 1 815 385 7776
 info@nikehydraulics.com

NIKE POWER EQUIPMENT Ltd.
 Unit 6, Stechford Trading Estate
 Lyndon Road, Stechford
 BIRMINGHAM B33 8BU, UK
 Tel +44 121 789 77 07
 Fax +44 121 789 68 66
 info@nikehydraulics.co.uk