

CFA - Single acting aluminium cylinders with spring return

NIKE cylinders CFA-series are all made of high-tensile aluminium and have a superior service life compared to similar products on the market today. The choice of material also offers an outstanding power to weight ration - approximately 50% less weight than comparable steel cylinders. Both cylinder tube and piston are hard anodized for extended protection against wear and corrosion.

All CFA cylinders come with both the saddle and a protecting base plate made of steel to guarantee a trouble free operation even when the surface and lifting points are not even or parallel.

Unlike some of our competitors, we design our cylinders to utilize **100%** of the given capacity and stroke - maximum power is always available.

Note! The NIKE range of aluminium cylinders are aimed to be used in low-cycle applications such as normal maintenance and lifting operations. These aluminium cylinders are designed to provide a lifetime of at least 10.000 cycles and should therefore NOT be used in high-cycle operations like production lines etc.

For such applications please consult your NIKE representative for advise.

Options for quick couplings

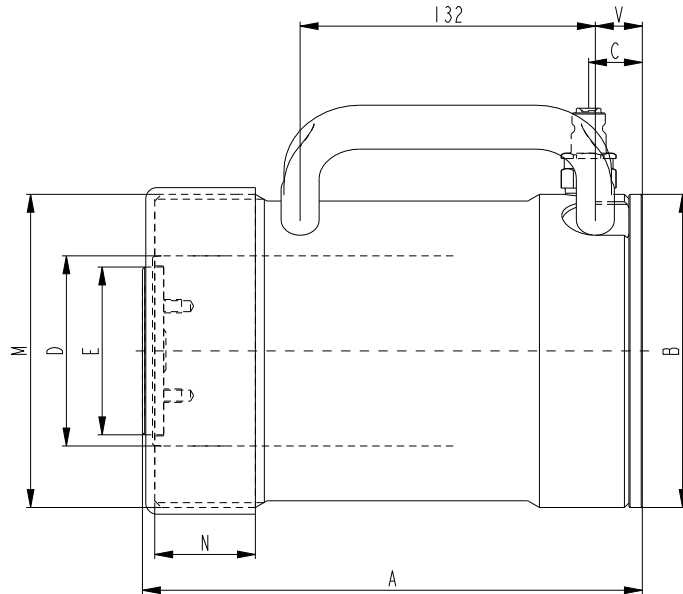
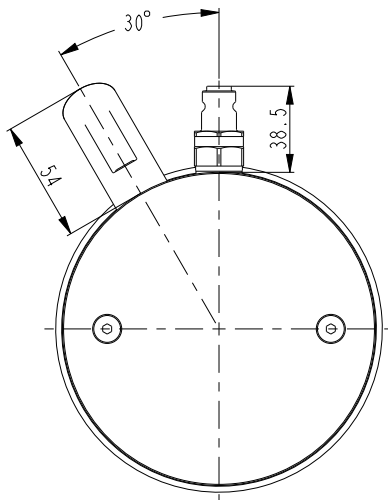
All cylinders can be delivered with quick couplings of insert type - male ⁽¹⁾ or of screw model - female ⁽²⁾. When ordering cylinders with screw type coupling, put "P" at the end of the model (e.g. CFC1010P).





Technical data

Name	Max. working press. MPa	Capacity kN (t)	Stroke mm	Stroke volume cm ³	Piston ø mm	Piston area cm ²	Diameter mm	Height mm	Weight kg
CFA250-100	70	230 (23)	100	332	60	33.2	100	212	4.4
CFA250-200	70	230 (23)	200	664	60	33.2	100	312	5.9
CFA500-100	70	500 (51)	100	709	85	70.9	140	223,5	9.2
CFA500-200	70	500 (51)	200	1418	85	70.9	140	323,5	12.7
CFA750-100	70	730 (74)	100	1039	100	103.9	170	235.5	14
CFA750-200	70	730 (74)	200	2078	100	103.9	170	335.5	18.3
CFA1000-100	70	930 (95)	100	1327	110	132.7	190	243	18.4
CFA1000-200	70	930 (95)	200	2655	110	132.7	190	343	24.7



Name	Capacity kN (t)	A mm	B ø mm	C mm	D ø mm	E ø mm	M	N mm	V mm
CFA250-100	230 (23)	212	100	24	60	53	M100 x 4-6g	37	-
CFA250-200	230 (23)	312	100	24	60	53	M100 x 4-6g	37	-
CFA500-100	500 (51)	223,5	140	31	85	75	M140 x 4-6g	45	21
CFA500-200	500 (51)	323,5	140	31	85	75	M140 x 4-6g	45	21
CFA750-100	730 (74)	235.5	170	18	100	75	M170 x 4-6g	54	31
CFA750-200	730 (74)	335.5	170	18	100	75	M170 x 4-6g	54	31
CFA1000-100	930 (95)	243	190	39	110	95	M190 x 4-6g	56	34
CFA1000-200	930 (95)	343	190	39	110	95	M190 x 4-6g	56	34

Accessories

THS75 - tilt saddle

This is a must accessory when there is risk of an off-center load. Maximum tilt angle is 5°.

THS75 fits cylinders from CFA500, CFA750, CFA1000, CFC50x, CFC75x and CFC100x



www.nikehydraulics.com

NIKE HYDRAULICS AB
 Box 1107
 631 80 Eskilstuna
 SWEDEN
 Tel +46 16 - 16 82 00
 Fax +46 16 - 13 93 16
 info@nikehydraulics.se

NIKE HYDRAULICS Inc.
 3980 W. Albany, Unit #1
 MCHENRY, IL 60050
 USA
 Tel + 1 815 385 7777
 Fax + 1 815 385 7776
 info@nikehydraulics.com

NIKE POWER EQUIPMENT Ltd.
 Unit 6, Stechford Trading Estate
 Lyndon Road, Stechford
 BIRMINGHAM B33 8BU, UK
 Tel +44 121 789 77 07
 Fax +44 121 789 68 66
 info@nikehydraulics.co.uk