

# CFA - Single acting aluminium cylinders with spring return

NIKE cylinders CFA-series are all made of high-tensile aluminium and have a superior service life compared to similar products on the market today. The choice of material also offers an outstanding power to weight ration - approximately 50% less weight than comparable steel cylinders. Both cylinder tube and piston are hard anodized for extended protection against wear and corrosion.

All CFA cylinders come with both the saddle and a protecting base plate made of steel to guarantee a trouble free operation even when the surface and lifting points are not even or parallel.

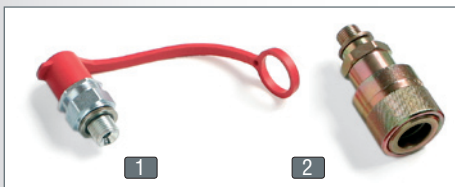
Unlike some of our competitors, we design our cylinders to utilize **100%** of the given capacity and stroke - maximum power is always available.

**Note!** The NIKE range of aluminium cylinders are aimed to be used in low-cycle applications such as normal maintenance and lifting operations. These aluminium cylinders are designed to provide a lifetime of at least 10.000 cycles and should therefore NOT be used in high-cycle operations like production lines etc.

For such applications please consult your NIKE representative for advise.

## Options for quick couplings

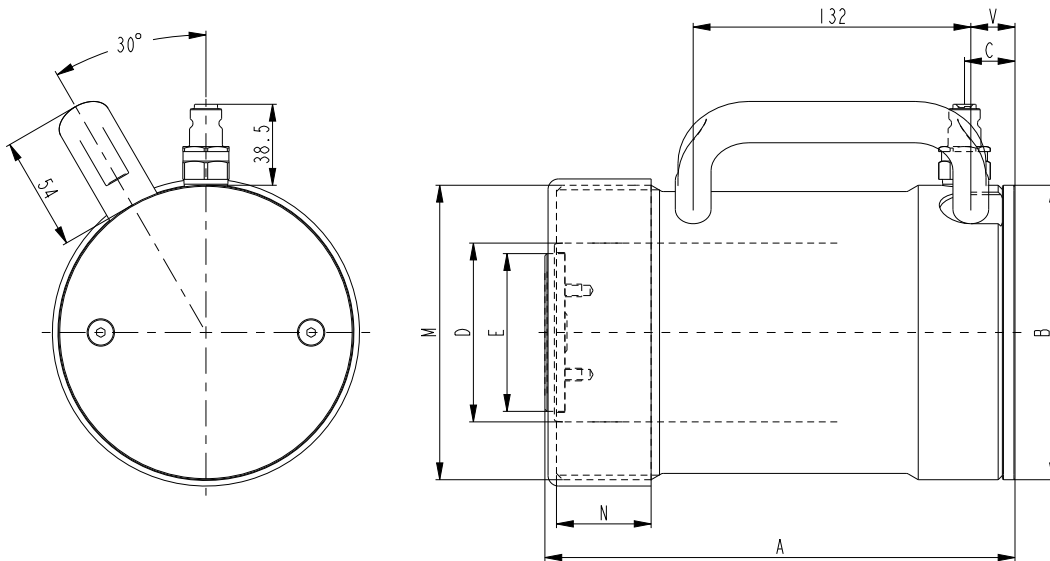
All cylinders can be delivered with quick couplings of insert type - male <sup>(1)</sup> or of screw model - female <sup>(2)</sup>. When ordering cylinders with screw type coupling, put "P" at the end of the model (e.g. CFC1010P).





# Technical data

Name	Max. working press. psi	Capacity tonf (US)	Stroke in	Stroke volume in <sup>3</sup>	Piston ø in	Piston area in <sup>2</sup>	Diameter in	Height in	Weight lb
CFA250-100	10150	26	3.9	20.26	2.4	5.1	3.9	8.3	9.7
CFA250-200	10150	26	7.9	40.52	2.4	5.1	3.9	12.3	13
CFA500-100	10150	56	3.9	43.27	3.3	11	5.5	223,5	20.3
CFA500-200	10150	56	7.9	86.53	3.3	11	5.5	323,5	28
CFA750-100	10150	82	3.9	63.4	3.9	16.1	6.7	9.3	30.9
CFA750-200	10150	82	7.9	126.81	3.9	16.1	6.7	13.2	40.3
CFA1000-100	10150	105	3.9	80.98	4.3	20.6	7.5	9.6	40.6
CFA1000-200	10150	105	7.9	162.02	4.3	20.6	7.5	13.5	54.5



Name	Capacity tonf (US)	A in	B ø in	C in	D ø in	E ø in	M	N in	V in
CFA250-100	26	8.3	3.9	0.9	2.4	2.1	M100 x 4-6g	1.5	-
CFA250-200	26	12.3	3.9	0.9	2.4	2.1	M100 x 4-6g	1.5	-
CFA500-100	56	223,5	5.5	1.2	3.3	3	M140 x 4-6g	1.8	0.8
CFA500-200	56	323,5	5.5	1.2	3.3	3	M140 x 4-6g	1.8	0.8
CFA750-100	82	9.3	6.7	0.7	3.9	3	M170 x 4-6g	2.1	1.2
CFA750-200	82	13.2	6.7	0.7	3.9	3	M170 x 4-6g	2.1	1.2
CFA1000-100	105	9.6	7.5	1.5	4.3	3.7	M190 x 4-6g	2.2	1.3
CFA1000-200	105	13.5	7.5	1.5	4.3	3.7	M190 x 4-6g	2.2	1.3

## Accessories

### THS75 - tilt saddle

This is a must accessory when there is risk of an off-center load. Maximum tilt angle is 5°.

THS75 fits cylinders from CFA500, CFA750, CFA1000, CFC50x, CFC75x and CFC100x



**NIKE HYDRAULICS Inc.**  
 3980 W. Albany, Unit #1  
 MCHENRY, IL 60050  
 USA  
 Tel + 1 815 385 7777  
 Fax + 1 815 385 7776  
 info@nikehydraulics.com

[www.nikehydraulics.com](http://www.nikehydraulics.com)

Please note that numbers shown in dimensional drawings are metric numbers.

1 mm = 0.0393 in