

BEU110 - Universal Hydraulic Ball joint extractor

- Adaptable for many different tasks.
- Fits "all" truck and bus brands on the market
- Long service life.
- 10t capacity.

The universal hydraulic ball joint extractor BEU110 is a really amazing tool. It comes as standard with two different adapters (TD40 and TD50), which makes the tool well prepared for different jobs. In this configuration the tool will fit, where working space allows; Scania, Volvo, MAN, Mercedes, Renault, Iveco and DAF trucks and in most cases also buses from the same manufacturers. A complete application list can be requested from your dealer or directly from us.

In order to cover other types and sizes of ball joints, the tool can easily be upgraded by adding more adapters - no need to have different tools for different jobs. The adaptor TD75 is such a standard accessory.

Besides that, the BEU110 has the same outstanding qualities as the BE57 - but with more power. Due to the use of hydraulic force, the BEU110 has a substantially longer service life than comparable mechanical tools. We strongly advise to use the tool together with a hydraulic pump from NIKE. Hydraulic pumps from NIKE are always equipped with a safety valve, the tool assembly is therefore protected from overload.

Swivel coupling ASE10 and NIKE quick coupling AQU8 are supplied together with the tool.



Technical data



Name	Working press. MPa	Capacity kN (t)	Stroke mm	Stroke volume cm ³	Weight kg
BEU110	70	110 (11)	54	86	3.8

Accessories

ADK Adapter Kit

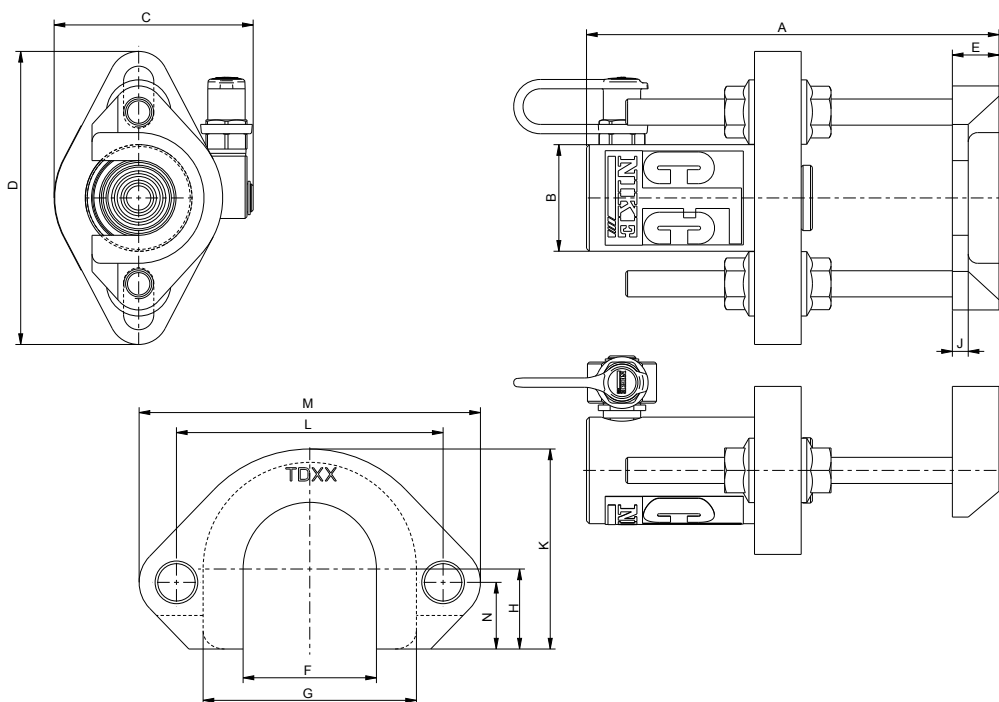
The ADK kit is used together with BEU110 to extract and insert the lower ball-joint on Mercedes-Benz Sprinter (W901-W905) 1995 to 2006 and Volkswagen LT2 1996 and onwards. Please note that there are two different control arm designs and ball joints on these vehicles. This kit is suitable for the Ø62 mm (outer diameter) ball joint.

BE110 Claw

This breaker is used together with BEU110 to remove the front hub from the wishbone arm prior to ball-joint removal on Mercedes-Benz Sprinter (W901-W905) 1995 to 2006 and Volkswagen LT2 1996 and onwards.

TD75 Adapter

TD75 is used for larger ball joints and has an opening of 75 mm / 3".



Name	A mm	B ø mm	C mm	D mm	E mm	F mm	G mm	H mm	J mm	K mm	L mm	M mm	N mm
BEU110	221	57.1	107	157	25	-	-	-	-	-	-	-	-
TD40	-	-	-	-	-	40	70	25	8.5	70	92	120	25
TD50	-	-	-	-	-	50	80	30	10	75	100	128	25
TD75*	-	-	-	-	-	75	105	30	10	87.5	125	153	25

* Accessory



www.nikehydraulics.com

NIKE HYDRAULICS AB

Box 1107
631 80 Eskilstuna
SWEDEN
Tel +46 16 - 16 82 00
Fax +46 16 - 13 93 16
info@nikehydraulics.se

NIKE HYDRAULICS Inc.

3980 W. Albany, Unit #1
MCHENRY, IL 60050
USA
Tel + 1 815 385 7777
Fax + 1 815 385 7776
info@nikehydraulics.com

NIKE POWER EQUIPMENT Ltd.

Unit 6, Stechford Trading Estate
Lyndon Road, Stechford
BIRMINGHAM B33 8BU, UK
Tel +44 121 789 77 07
Fax +44 121 789 68 66
info@nikehydraulics.co.uk